



# **kirker**

## **SUSPENSION BASE PORTFOLIO**

General and technical formulations designed for creating crème, frost, and glitter nail lacquer.

Each suspension base has been formulated using a proper balance of ingredients each having their own unique story.

## **FORMULATIONS**

### **MODEST**

UNIVERSAL BASE THAT DOES IT ALL.

### **ADVANCED**

UNIQUELY DEVELOPED POLYMER TECHNOLOGY.

### **FAST DRY**

TIME IS MONEY. GET THERE FASTER WITHOUT COMPROMISING GLOSS AND WEAR.

### **PLUMPED**

GEL-LIKE, FORTIFIED WITH UNIQUE & SUPERIOR INGREDIENTS.

### **KONSCIOUS**

SUSTAINABLE FORMULATION MADE FROM RENEWABLE RESOURCES.

### **EXCLUSIVE ACRYLIC**

LONG WEARING, SHOCK PROOF MULTI-POLYMER TECHNOLOGY.

### **PROFESSIONAL**

OUTLAST, OUTSHINE, OUTDO.

### **GLITTER**

GLITZ, SHIMMER, GLISTEN, AND SPARKLE.

**kirker**



# MODEST

UNIVERSAL BASE THAT DOES IT ALL.

## PROFILE

I am a stabilized, general formula designed for creating crème and frost shades. I am budget friendly, just add color, mix and go!

**FORMULA NO.**  
**SB08711TV**

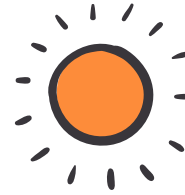
## PHYSICAL CHARACTERISTICS

Viscosity TM-007C - 500 - 600 CPS  
Solids TM-004 - 20.00% - 24.00%  
SPG TM-002 - 0.93 - 0.97  
Dry Time TM-50 - 3:00 - 4:00

## CHARACTERISTICS



● ● ● ● ● ●  
DRYING



● ● ● ● ● ● ● ●  
GLOSS



● ● ● ● ● ● ● ●  
WEAR



● ● ● ● ● ● ● ●  
APPLICATION



● ● ● ● ● ● ● ●  
GLOBAL COMPLIANCE



● ● ● ● ● ● ● ●  
VEGAN FRIENDLY

## WHAT I DO BEST

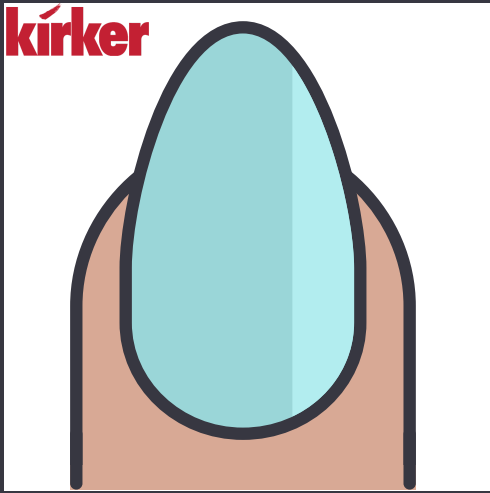
- EASE OF APPLICATION - FLOW
- CONTINUOUS EVEN FILM
- HIGH DEFINITION COLOR
- VERSATILE TO ACCOMMODATE CRÈME, FROST, METALLIC, GLITTER, SHEER COLORS
- HIGH-OPACITY
- DURABLE
- FLEXIBLE
- COLOR FIDELITY
- VEGAN
- NO ANIMAL DERIVED RAW MATERIALS

## WHAT I'M FORMULATED WITHOUT

- toluene
- formaldehyde
- formaldehyde resin
- camphor
- methylisothiazolinone
- tphp
- ethyl tosylamide
- animal-derived ingredients
- nonylphenol ethoxylate
- phthalates
- acetone
- bisphenol A
- xylene
- fragrance
- parabens
- sulfates
- glycol
- mehq/hq



**kirker**



## FAST DRY SPEED

TIME IS MONEY.  
GET THERE FASTER  
WITHOUT COMPROMISING  
GLOSS AND WEAR.

## PROFILE

I am properly formulated with a balance of strong film forming agents that offer great gloss, extended wear and maximum protection to the nail with an immediate, quick dry application. Apply me and go.

## FORMULA NO. SB12042FH

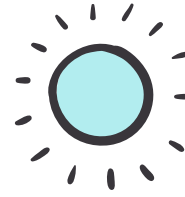
## PHYSICAL CHARACTERISTICS

Viscosity TM-007C - 400 - 500 CPS  
Solids TM-004 - 28.00% - 32.00%  
SPG TM-002 - 0.98 - 1.02  
Dry Time TM-50 - 2:00 - 3:00

## CHARACTERISTICS



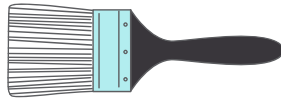
●●●●●  
DRYING



●●●●●●  
GLOSS



●●●●●●●●  
WEAR



●●●●●  
APPLICATION



●●●●●  
GLOBAL COMPLIANCE



●●●●●  
VEGAN FRIENDLY

## WHAT I DO BEST

- ULTIMATE DRY TIME
- MAINTAINS WEAR AND GLOSS RETENTION
- COLOR FIDELITY
- CHIP RESISTANT
- DURABLE FINISH
- SUPERIOR RESULTS
- FAST SETTING
- CREAMY, AND LUSTROUS APPLICATION
- VERSATILE FOR ALL COLOR FORMULATIONS
- VEGAN
- NO ANIMAL DERIVED RAW MATERIALS

## WHAT I'M FORMULATED WITHOUT

- toluene
- formaldehyde
- formaldehyde resin
- camphor
- methylisothiazolinone
- tphp
- ethyl tosylamide
- animal-derived ingredients
- nonylphenol ethoxylate
- phthalates
- acetone
- bisphenol A
- xylene
- fragrance
- parabens
- sulfates
- glycol
- mehq/hq



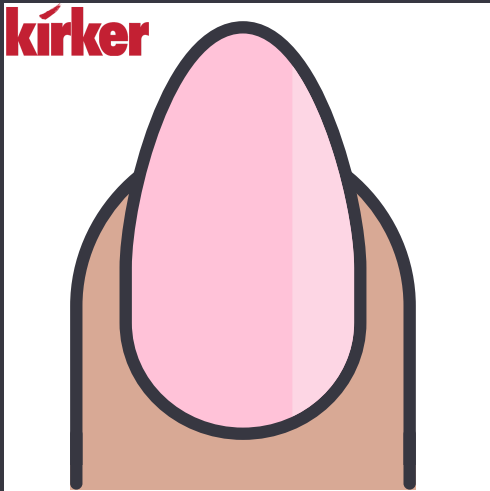








**kirker**



# GLITTER CRYSTAL CLEAR

GLITZ, SHIMMER,  
GLISTEN, AND SPARKLE.

## PROFILE

I was uniquely designed to allow glitter to shimmer and sparkle both in the bottle as well as on the nail. I am formulated to incorporate a variety of glitter in various shapes and sizes allowing infinite combinations to be created.

**FORMULA NO.  
SB09912RM**

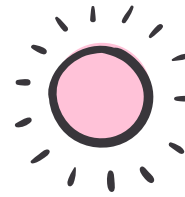
## PHYSICAL CHARACTERISTICS

Viscosity TM-007C - 550 - 650 CPS  
Solids TM-004 - 28.50% - 31.50%  
SPG TM-002 - 0.95 - 0.99  
Dry Time TM-50 - 5:30 - 6:30

## CHARACTERISTICS



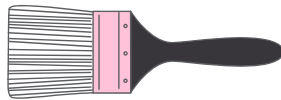
●●●●●●●●  
DRYING



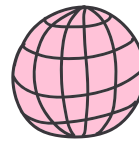
●●●●●●●●  
GLOSS



●●●●●●●●  
WEAR



●●●●●●●●  
APPLICATION



●●●●●●●●  
GLOBAL COMPLIANCE



●●●●●●●●  
VEGAN FRIENDLY

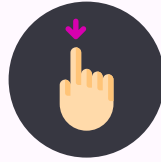
## WHAT I DO BEST

- PROPERLY BALANCED FORMULATION
- QUICK DRYING
- DURABLE FILM
- GLOSS RETENTION
- CHIP RESISTANT
- VEGAN
- NO ANIMAL DERIVED RAW MATERIALS
- WATER AND DETERGENT RESISTANT
- COLOR FIDELITY
- VERSATILE FOR ALL SHAPES AND SIZES

## WHAT I'M FORMULATED WITHOUT

- toluene
- formaldehyde
- formaldehyde resin
- camphor
- methylisothiazolinone
- tphp
- ethyl tosylamide
- animal-derived ingredients
- nonylphenol ethoxylate
- phthalates
- acetone
- bisphenol A
- xylene
- fragrance
- parabens
- sulfates
- glycol
- mehq/hq

# TEAM KIRKER IS JUST A FINGERTIP AWAY!



## CALL

us: (973) 754 - 9000  
uk: 44.1349.855270



## E-MAIL

[marketing@kirkerent.com](mailto:marketing@kirkerent.com)



## VISIT

[www.kirkerent.com](http://www.kirkerent.com)



## FOLLOW



55 E 6TH STREET  
PATERSON, NJ 07524  
973 - 754 - 9000

**kirker**



6/10A INVERBREAKIE  
INDUSTRIAL ESTATE  
INVERGORDON, ROSS-SHIRE  
IV18 0QR, UK



(973) 754 - 9000

[www.kirkerent.com](http://www.kirkerent.com)



44.1349.855270