

# PRODUCT CATALOG

## WHO, WHAT, WEAR.

### CAREFULLY CRAFTED COLOR & CARE

AT THE TIP OF YOUR FINGERS



## WHO.


Superior nail color and care products formulated by leading industry experts.

## WHAT.


A catalog of products each responsible for curating the perfect manicure.


## WEAR.

Customizable formulations that can be tailored to capture an all-inclusive experience.


 55 E 6TH STREET  
PATERSON, NJ 07524  
973 - 754 - 9000

**kirker**

 6/10A INVERBREAKIE  
INDUSTRIAL ESTATE  
INVERGORDON, ROSS-SHIRE  
IV18 0QR, UK

 (973) 754 - 9000

[www.kirkerent.com](http://www.kirkerent.com)

 44.1349.855270

# PRODUCT CATALOG

## WHO, WHAT, WEAR.

### prep

- REMOVERS** - (delete it)
- SCRUBS** - (gentle exfoliator)
- CLEANSERS** - (ultimate canvas)



### first

- PLUMPING BASE COATS** - (cushion for color)
- STRENGTHENING BASE COATS** - (for the weak)
- HARDENERS** - (rock solid)
- RIDGE FILLERS** - (surface smoother)
- HYDRATORS** - (nail quench)
- BRIGHTENERS** - (color corrector)
- NAIL GROWTH ELIXIRS** - (your nails but better)



### formula

- MODEST** - (universal base that does it all)
- ADVANCED** - (high performance polymer technology)
- FAST DRY** - (get there faster without compromise)
- PLUMPED** - (gel-like finish with fortified ingredients)
- KONSCIOUS** - (sustainable from renewable resources)
- PROFESSIONAL** - (outlast, outshine, outdo)
- EXCLUSIVE ACRYLIC** - (longwearing, shock proof)



### finish

- FAST DRY TOP COATS** - (fast and glossy)
- PLUMPING TOP COATS** - (gel-like finish)
- SMUDGE FIXERS** - (worry no more)
- STRENGTHENING TOP COATS** - (toughen up)
- HIGH GLOSS TOP COATS** - (the glossiest)
- ALL IN ONE** - (multi-tasker)
- DRYING DROPS** - (ready in a flash)
- CUTICLE OILS** - (deep hydration)
- CUTICLE SERUMS** - (revive and moisturize)



### additions

- ADDITIVES** - (botanical, mineral, vitamin/protein, tech)
- FRAGRANCE** - (multi-sensory experience)
- COLOR** - (design a story)
- BIO-SOURCED** - (sustainable options available)



55 E 6TH STREET  
PATERSON, NJ 07524  
973 - 754 - 9000

**kirker**

6/10A INVERBREAKIE  
INDUSTRIAL ESTATE  
INVERGORDON, ROSS-SHIRE  
IV18 0QR, UK

(973) 754 - 9000

[www.kirkerent.com](http://www.kirkerent.com)

44.1349.855270

# PRODUCT CATALOG

## WHO, WHAT, WEAR.

prep

**Products created to prepare the nail and nail bed for the ultimate manicure. When the nail bed is properly prepped for color the longevity of the manicure is extended.**

**THE  
ULTIMATE  
PREP PRODUCTS**



### **REMOVERS**

Products formulated to erase old nail lacquer and residue and prep the nails for the manicure. Delete and repeat. Available in various textures, colors, and scents.

### **SCRUBS**

Products formulated to exfoliate the nails and nail bed while also removing dirt and other residues. Available in various textures, colors, and scents.

### **CLEANSERS**

Products formulated to prep the nail for the perfect canvas needed to apply color and help the longevity of the manicure.

**pair with:**

**FIRST** product, colored nail enamel, and **FINISH** product.

55 E 6TH STREET  
PATERSON, NJ 07524

**kirker**

6/10A INVERBREAKIE  
INDUSTRIAL ESTATE  
INVERGORDON, ROSS-SHIRE  
IV18 0QR, UK

(973) 754 - 9000

[www.kirkerent.com](http://www.kirkerent.com)

44.1349.855270

# PRODUCT CATALOG

## WHO, WHAT, WEAR.

first

Products created as the first step to the perfect manicure. These products are essential as they are key in acting as a color magnet while performing as a primer.

### THE ULTIMATE FIRST STEP



#### **BASE COATS**

Products formulated to act as a protective layer and crucial for nail lacquer adhesion.

#### **STRENGTHENERS**

Products formulated to help nails become stronger to help prevent breaking and splitting.

#### **HARDENERS**

Products formulated to help nails become tougher and more bend resistant.

#### **RIDGE FILLERS**

Products formulated to help camouflage nail imperfections and discoloration.

#### **HYDRATORS**

Products formulated to help keep the nails more flexible and moisture balanced.

#### **BRIGHTENERS**

Products formulated to help mask color impurities for a whiter and brighter appearance.

#### **NAIL GROWTH ELIXIRS**

Products formulated to help minimize breakage and peeling and renew nails to a healthy condition.

**pair with:**

PREP product, colored nail enamel, and FINISH product.

55 E 6TH STREET  
PATERSON, NJ 07524

**kirker**

6/10A INVERBREAKIE  
INDUSTRIAL ESTATE  
INVERGORDON, ROSS-SHIRE  
IV18 0QR, UK

(973) 754 - 9000

[www.kirkerent.com](http://www.kirkerent.com)

44.1349.855270

# PRODUCT CATALOG

## WHO, WHAT, WEAR.

formula

The most revolutionary, custom formulations that deliver the best cosmetic quality, durability, innovation, and technology that over-perform.

**THE  
ULTIMATE  
FORMULATION**



### **MODEST**

Universal base that does it all.

### **ADVANCED**

Uniquely developed polymer technology.

### **FAST DRY**

Get there faster without compromising time.

### **PLUMPED**

Fortified ingredients with a gel-like finish.

### **KONSCIOUS**

Sustainable, made from renewable resources.

### **PROFESSIONAL**

Superior gloss and superior wear.

### **EXCLUSIVE ACRYLIC**

Shock-proof, multi polymer technology.

\*\*\*sale of base and color solutions also available

**pair with:**

PREP product, FIRST product, and FINISH product.

55 E 6TH STREET  
PATERSON, NJ 07524

**kirker**

6/10A INVERBREAKIE  
INDUSTRIAL ESTATE  
INVERGORDON, ROSS-SHIRE  
IV18 0QR, UK

(973) 754 - 9000

[www.kirkerent.com](http://www.kirkerent.com)

44.1349.855270

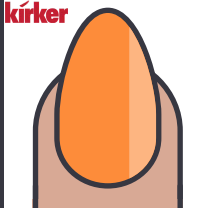
# PRODUCT CATALOG

## WHO, WHAT, WEAR.

formula

### MODEST Formulation:

**kirker**



**MODEST**  
UNIVERSAL BASE  
THAT DOES IT ALL.

### PROFILE

I am a stabilized, general formula designed for creating crème and frost shades. I am budget friendly, just add color, mix and go!

**FORMULA NO.**  
**SB0871TV**

### PHYSICAL CHARACTERISTICS

Viscosity TM-007C - 500 - 600 CPS  
Solids TM-004 - 20.00% - 24.00%  
SPG TM-002 - 0.93 - 0.97  
Dry Time TM-50 - 3:00 - 4:00

### CHARACTERISTICS



●●●●●  
DRYING



●●●●●  
GLOSS



●●●●●  
WEAR



●●●●●  
APPLICATION



●●●●●  
GLOBAL  
COMPLIANCE



●●●●●  
VEGAN  
FRIENDLY

### 🔍 WHAT I DO BEST

- EASE OF APPLICATION - FLOW
- CONTINUOUS EVEN FILM
- HIGH DEFINITION COLOR
- VERSATILE TO ACCOMMODATE CRÈME, FROST, METALLIC, GLITTER, SHEER COLORS
- HIGH-OPACITY
- DURABLE
- FLEXIBLE
- COLOR FIDELITY
- VEGAN
- NO ANIMAL DERIVED RAW MATERIALS

### 🚫 WHAT I'M FORMULATED WITHOUT

- toluene
- formaldehyde
- formaldehyde resin
- camphor
- methylisothiazolinone
- tphp
- ethyl tosylamide
- animal-derived ingredients
- nonylphenol ethoxylate
- phthalates
- acetone
- bisphenol A
- xylene
- fragrance
- parabens
- sulfates
- glycol
- mehq/hq



55 E 6TH STREET  
PATERSON, NJ 07524

**kirker**



6/10A INVERBREAKIE  
INDUSTRIAL ESTATE  
INVERGORDON, ROSS-SHIRE  
IV18 0QR, UK



(973) 754 - 9000

www.kirkerent.com



44.1349.855270

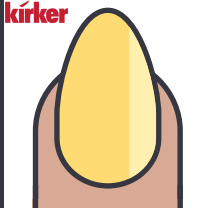
# PRODUCT CATALOG

## WHO, WHAT, WEAR.

formula

### ADVANCED Formulation:

**kirker**



## ADVANCED HIGH PERFORMANCE

UNIQUELY DEVELOPED  
POLYMER TECHNOLOGY.

## PROFILE

I am formulated using a proper balance of resin, plasticizer, and nitrocellulose to provide a durable film that offers high gloss, exceptional wear, and maximum protection.

## FORMULA NO. SB00155TV

### PHYSICAL (H) CHARACTERISTICS

Viscosity TM-007C - 550 - 650 CPS  
Solids TM-004 - 28.50% - 31.50%  
SPG TM-002 - 0.95 - 0.99  
Dry Time TM-50 - 4:30 - 5:30

### CHARACTERISTICS



●●●●●  
DRYING



●●●●●  
GLOSS



●●●●●  
WEAR



●●●●●  
APPLICATION



●●●●●  
GLOBAL  
COMPLIANCE



●●●●●  
VEGAN  
FRIENDLY

### 🔍 WHAT I DO BEST

- SUPERIOR WEAR
- QUICK DRYING
- HIGH GLOSS
- GLOSS RETENTION
- CHIP RESISTANT
- VEGAN
- NO ANIMAL DERIVED RAW MATERIALS
- WATER AND DETERGENT RESISTANT
- COLOR FIDELITY
- VERSATILE FOR ALL COLOR FORMULATIONS

### 🚫 WHAT I'M FORMULATED WITHOUT

- toluene
- formaldehyde
- formaldehyde resin
- camphor
- methylisothiazolinone
- tphp
- ethyl tosylamide
- animal-derived ingredients
- nonylphenol ethoxylate
- phthalates
- acetone
- bisphenol A
- xylene
- fragrance
- parabens
- sulfates
- glycol
- mehq/hq



55 E 6TH STREET  
PATERSON, NJ 07524

**kirker**



6/10A INVERBREAKIE  
INDUSTRIAL ESTATE  
INVERGORDON, ROSS-SHIRE  
IV18 0QR, UK



(973) 754 - 9000

www.kirkerent.com



44.1349.855270

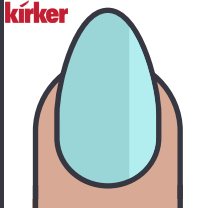
# PRODUCT CATALOG

## WHO, WHAT, WEAR.

formula

### FAST DRY Formulation:

**kirker**



### FAST DRY SPEED

TIME IS MONEY. GET THERE FASTER WITHOUT COMPROMISING GLOSS AND WEAR.

### PROFILE

I am properly formulated with a balance of strong film forming agents that offer great gloss, extended wear and maximum protection to the nail with an immediate, quick dry application. Apply me and go.

### FORMULA NO. SB12042FH

#### PHYSICAL (H) CHARACTERISTICS

Viscosity TM-007C - 400 - 500 CPS  
Solids TM-004 - 28.00% - 32.00%  
SPG TM-002 - 0.98 - 1.02  
Dry Time TM-50 - 2:00 - 3:00

#### CHARACTERISTICS



.....  
DRYING



.....  
GLOSS



.....  
WEAR



.....  
APPLICATION



.....  
GLOBAL COMPLIANCE



.....  
VEGAN FRIENDLY

#### 🔍 WHAT I DO BEST

- ULTIMATE DRY TIME
- MAINTAINS WEAR AND GLOSS RETENTION
- COLOR FIDELITY
- CHIP RESISTANT
- DURABLE FINISH
- SUPERIOR RESULTS
- FAST SETTING
- CREAMY, AND LUSTROUS APPLICATION
- VERSATILE FOR ALL COLOR FORMULATIONS
- VEGAN
- NO ANIMAL DERIVED RAW MATERIALS

#### 🚫 WHAT I'M FORMULATED WITHOUT

- toluene
- formaldehyde
- formaldehyde resin
- camphor
- methylisothiazolinone
- tphp
- ethyl tosylamide
- animal-derived ingredients
- nonylphenol ethoxylate
- phthalates
- acetone
- bisphenol A
- xylene
- fragrance
- parabens
- sulfates
- glycol
- mehq/hq



55 E 6TH STREET  
PATERSON, NJ 07524

**kirker**



6/10A INVERBREAKIE  
INDUSTRIAL ESTATE  
INVERGORDON, ROSS-SHIRE  
IV18 0QR, UK



(973) 754 - 9000

www.kirkerent.com



44.1349.855270



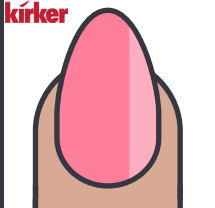
# PRODUCT CATALOG

## WHO, WHAT, WEAR.

formula

### PLUMPED Formulation:

**kirker**



**PLUMPED  
GEL-LIKE**  
FORTIFIED WITH  
UNIQUE & SUPERIOR  
INGREDIENTS.

### PROFILE

I am a properly balanced formula with resin, plasticizers and nitrocellulose to provide a durable film that offers high initial gloss and gloss retention, exceptional wear, maximum protection, and a gel-like finish.

Plump it up!

**FORMULA NO.  
SB00323GW**

### PHYSICAL CHARACTERISTICS

Viscosity TM -007C - 475 - 650 CPS  
Solids TM-004 - 29.00% - 32.00%  
SPG TM-002 - 0.97 - 1.01  
Dry Time TM-50 - 6:00 - 6:30

### CHARACTERISTICS



DRYING



GLOSS



WEAR



APPLICATION



GLOBAL  
COMPLIANCE



VEGAN  
FRIENDLY

### WHAT I DO BEST

- SUPERIOR GLOSS
- SUPERIOR WEAR
- CHIP RESISTANT
- FLEXIBILITY AND DURABILITY
- EASE OF APPLICATION - FLOW
- NON FADING/COLOR FIDELITY
- CONTINUOUS, EVEN FILM
- VEGAN
- NO ANIMAL DERIVED RAW MATERIALS
- GEL-LIKE, CUSHION APPLICATION

### WHAT I'M FORMULATED WITHOUT

- toluene
- formaldehyde
- formaldehyde resin
- camphor
- methylisothiazolinone
- tph
- ethyl tosylamide
- animal-derived ingredients
- nonylphenol ethoxylate
- phthalates
- acetone
- bisphenol A
- xylene
- fragrance
- parabens
- sulfates
- glycol
- mehq/hq



55 E 6TH STREET  
PATERSON, NJ 07524

**kirker**



6/10A INVERBREAKIE  
INDUSTRIAL ESTATE  
INVERGORDON, ROSS-SHIRE  
IV18 0QR, UK



(973) 754 - 9000

www.kirkerent.com



44.1349.855270

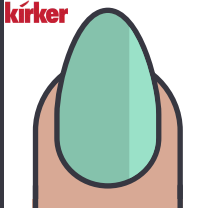
# PRODUCT CATALOG

## WHO, WHAT, WEAR.

formula

### KONSCIOUS Formulation:

**kirker**



### KONSCIOUS INCORPORATING NATURE

SUSTAINABLE  
FORMULATION MADE  
FROM RENEWABLE  
RESOURCES.

### PROFILE

I am formulated  
using naturally  
sourced  
ingredients using  
vegetable and  
other origins for  
polymers,  
plasticizers, and  
solvents. Plant  
forward!

### FORMULA NO. SB05583DB

#### PHYSICAL CHARACTERISTICS

Viscosity TM -007C - 500 - 600 CPS  
Solids TM-004 - 28.00% - 32.00%  
SPG TM-002 - 0.96 - 1.00  
Dry Time TM-50 - 4:30 - 5:30

#### CHARACTERISTICS



.....  
DRYING



.....  
GLOSS



.....  
WEAR



.....  
APPLICATION



.....  
GLOBAL  
COMPLIANCE



.....  
VEGAN  
FRIENDLY

#### WHAT I DO BEST

- SUSTAINABLE
- BIO-SOURCED INGREDIENTS
- LONG WEAR
- GLOSS RETENTION
- FLAWLESS APPLICATION
- COLOR RETENTION
- FULL COVERAGE
- VERSATILE FOR ALL COLOR FORMULATIONS
- VEGAN
- NO ANIMAL DERIVED RAW MATERIALS

#### WHAT I'M FORMULATED WITHOUT

- toluene
- formaldehyde
- formaldehyde resin
- camphor
- methylisothiazolinone
- tphp
- ethyl tosylamide
- animal-derived ingredients
- nonylphenol ethoxylate
- phthalates
- acetone
- bisphenol A
- xylene
- fragrance
- parabens
- sulfates
- glycol
- mehq/hq



55 E 6TH STREET  
PATERSON, NJ 07524

**kirker**



6/10A INVERBREAKIE  
INDUSTRIAL ESTATE  
INVERGORDON, ROSS-SHIRE  
IV18 0QR, UK



(973) 754 - 9000

www.kirkerent.com



44.1349.855270

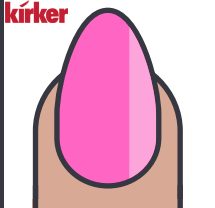
# PRODUCT CATALOG

## WHO, WHAT, WEAR.

formula

### PROFESSIONAL Formulation:

**kirker**



**PROFESSIONAL  
LONG WEAR,  
HIGH GLOSS.**

**OUTLAST, OUTSHINE,  
OUTDO.**

### PROFILE

I was designed to achieve superior gloss and superior wear while being balanced with resin, plasticizer, and film forming polymers. I am formulated with an epoxy resin which allows me to shine bright like a diamond! Put your shades on when polishing me, it's about to get shiny!

**FORMULA NO.  
SB05592DB**

### PHYSICAL CHARACTERISTICS

Viscosity TM -007C - 550 - 650 CPS  
Solids TM-004 - 28.50% - 31.50%  
SPG TM-002 - 0.97- 1.01  
Dry Time TM-50 - 5:00 - 6:00

### CHARACTERISTICS



●●●●●  
**DRYING**



●●●●●  
**GLOSS**



●●●●●  
**WEAR**



●●●●●  
**APPLICATION**



●●●●●  
**GLOBAL  
COMPLIANCE**



●●●●●  
**VEGAN  
FRIENDLY**

### 🔍 WHAT I DO BEST

- SUPERIOR GLOSS
- SUPERIOR WEAR
- CHIP RESISTANT
- FLEXIBILITY AND DURABILITY
- EASE OF APPLICATION - FLOW
- NON FADING/COLOR FIDELITY
- CONTINUOUS, EVEN FILM
- VEGAN
- NO ANIMAL DERIVED RAW MATERIALS

### 🚫 WHAT I'M FORMULATED WITHOUT

- toluene
- formaldehyde
- formaldehyde resin
- camphor
- methylisothiazolinone
- tphp
- ethyl tosylamide
- animal-derived ingredients
- nonylphenol ethoxylate
- phthalates
- acetone
- bisphenol A
- xylene
- fragrance
- parabens
- sulfates
- glycol
- mehq/hq



55 E 6TH STREET  
PATERSON, NJ 07524

**kirker**



6/10A INVERBREAKIE  
INDUSTRIAL ESTATE  
INVERGORDON, ROSS-SHIRE  
IV18 0QR, UK



(973) 754 - 9000

www.kirkerent.com



44.1349.855270

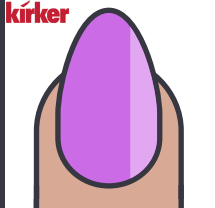
# PRODUCT CATALOG

## WHO, WHAT, WEAR.

formula

### EXCLUSIVE ACRYLIC Formulation:

**kirker**



**EXCLUSIVE ACRYLIC**  
**LONG WEAR**  
**SHOCK PROOF**  
**MULTI-POLYMER**  
**TECHNOLOGY.**

### PROFILE

I am formulated using an exclusive, acrylic polymer containing a unique functional group in combination with co-polymers to provide gloss retention, adhesion, and promote nail strength.

**FORMULA NO.**  
**SB12299FH**

### PHYSICAL CHARACTERISTICS

Viscosity TM -007C - 550 - 650 CPS  
Solids TM-004 - 28.0% - 32.00%  
SPG TM-002 - 0.96 - 1.00  
Dry Time TM-50 - 5:30 - 6:30

### CHARACTERISTICS



● ● ● ● ●  
**DRYING**



● ● ● ● ●  
**GLOSS**



● ● ● ● ●  
**WEAR**



● ● ● ● ●  
**APPLICATION**



● ● ● ● ●  
**GLOBAL COMPLIANCE**



● ● ● ● ●  
**VEGAN FRIENDLY**

### WHAT I DO BEST

- WEAR WITHOUT TEAR
- UV CURE FREE ACRYLIC FORMULA
- CLINICALLY TESTED TO ASSESS IMPROVED NAIL STRENGTH AND HARDNESS UP TO 20%
- 92.3% OF TESTERS PERCEIVED AN INCREASE IN NAIL STRENGTH ALLOW FOR PIGMENTED COLORS TO BE MORE LIGHT AND HEAT STABLE
- HIGH IMPACT RESISTANCE, FLEXIBLE
- VERSATILE FOR ALL COLOR FORMULATIONS
- VEGAN
- NO ANIMAL-DERIVED RAW MATERIALS

### WHAT I'M FORMULATED WITHOUT

- toluene
- formaldehyde
- formaldehyde resin
- camphor
- methylisothiazolinone
- tphp
- ethyl tosylamide
- animal-derived ingredients
- nonylphenol ethoxylate
- phthalates
- acetone
- bisphenol A
- xylene
- fragrance
- parabens
- sulfates
- glycol
- mehq/hq

55 E 6TH STREET  
PATERSON, NJ 07524

**kirker**

6/10A INVERBREAKIE  
INDUSTRIAL ESTATE  
INVERGORDON, ROSS-SHIRE  
IV18 0QR, UK

(973) 754 - 9000

www.kirkerent.com

44.1349.855270

# PRODUCT CATALOG

## WHO, WHAT, WEAR.

finish

Products created to protect your manicure or help to aid in maintenance and rejuvenation.



### THE ULTIMATE ARMOR

#### **FAST DRY TOP COAT**

Products formulated to dry fast while creating a protective, chip-resistant finish.

#### **PLUMPING TOP COAT**

Products formulated to provide protection with a high gloss, cushiony finish.

#### **SMUDGE FIXER**

Products formulated to help fix smudges, dents, nicks, and other imperfections.

#### **STRENGTHENING TOP COAT**

Products formulated to help weak and brittle nails become more bend resistant.

#### **HIGH GLOSS TOP COAT**

Products formulated to provide color enhancing protection with superb gloss.

#### **ALL IN ONE**

Products formulated to provide multi-purpose benefits.

#### **DRYING DROPS**

Products formulated to protect the nails from smudging while drying.

#### **CUTICLE OILS**

Products formulated to help nourish and revitalize the cuticle and nail bed.

#### **CUTICLE SERUMS**

Products formulated to help restore and condition the cuticle and nail bed.

### pair with:

PREP product, FIRST product, and colored nail enamel.

55 E 6TH STREET  
PATERSON, NJ 07524

**kirker**

6/10A INVERBREAKIE  
INDUSTRIAL ESTATE  
INVERGORDON, ROSS-SHIRE  
IV18 0QR, UK

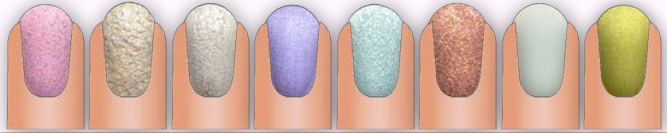
(973) 754 - 9000

[www.kirkerent.com](http://www.kirkerent.com)

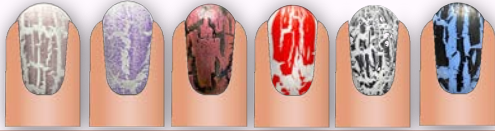
44.1349.855270

# SPECIALTY EFFECTS

## tepture



## crackle



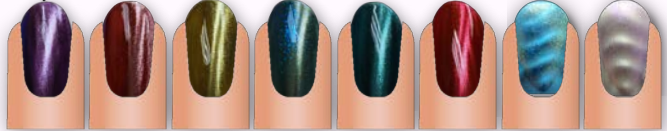
## nebula



## chrome



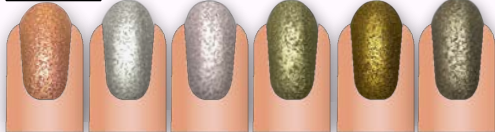
## magnet



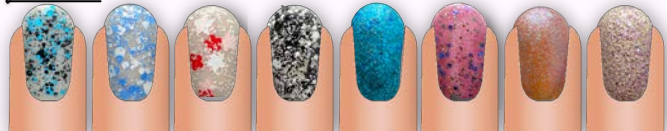
## neon



## crushed foil



## glitter



## biodegradable glitter



# PRODUCT CATALOG

## WHO, WHAT, WEAR.

TEAM KIRKER IS JUST  
A FINGERTIP AWAY!



**CALL**



us: (973) 754 - 9000

uk: 44.1349.855270

**E-MAIL**



[marketing@kirkerent.com](mailto:marketing@kirkerent.com)

**VISIT**



[www.kirkerent.com](http://www.kirkerent.com)

**FOLLOW**



55 E 6TH STREET  
PATERSON, NJ 07524  
973 - 754 - 9000

**kirker**



6/10A INVERBREAKIE  
INDUSTRIAL ESTATE  
INVERGORDON, ROSS-SHIRE  
IV18 0QR, UK



(973) 754 - 9000

[www.kirkerent.com](http://www.kirkerent.com)



44.1349.855270